

Model M25: 50 kV, 4W X-ray Monoblock - The M25 x-ray monoblock is a fully integrated miniature 50 kV, 4W x-ray generator designed specifically to be used as component of a handheld, portable, or benchtop x-ray instrument. The source includes a miniature sealed x-ray tube with a transmission-type end window, a high voltage power supply, and control electronics contained in a compact grounded enclosure.

Features

Compact design – ideal for handheld, portable and benchtop instruments

Low power consumption – compatible with battery operation

Easy to operate – analog control interface

Integrated design – no high voltage cables

Machined metal enclosure – precision mounting and alignment

Patented X-ray Omnishield™ – 360 degree light weight radiation shielding

Wide cone angle – 110 degree full width x-ray cone angle

Threaded adapter for collimated applications – optional

Applications

XRF Materials Analysis

- Alloy and metal sorting
- ROHS and ELV compliance
- Environmental analysis
- Forensic science
- Mining and geology
- Art and archeology
- Coating thickness
- Lead detection
- Quality control
- Precious metal verification

X-ray Imaging

- Medical, dental, small animal
- NDT
- Security, contraband

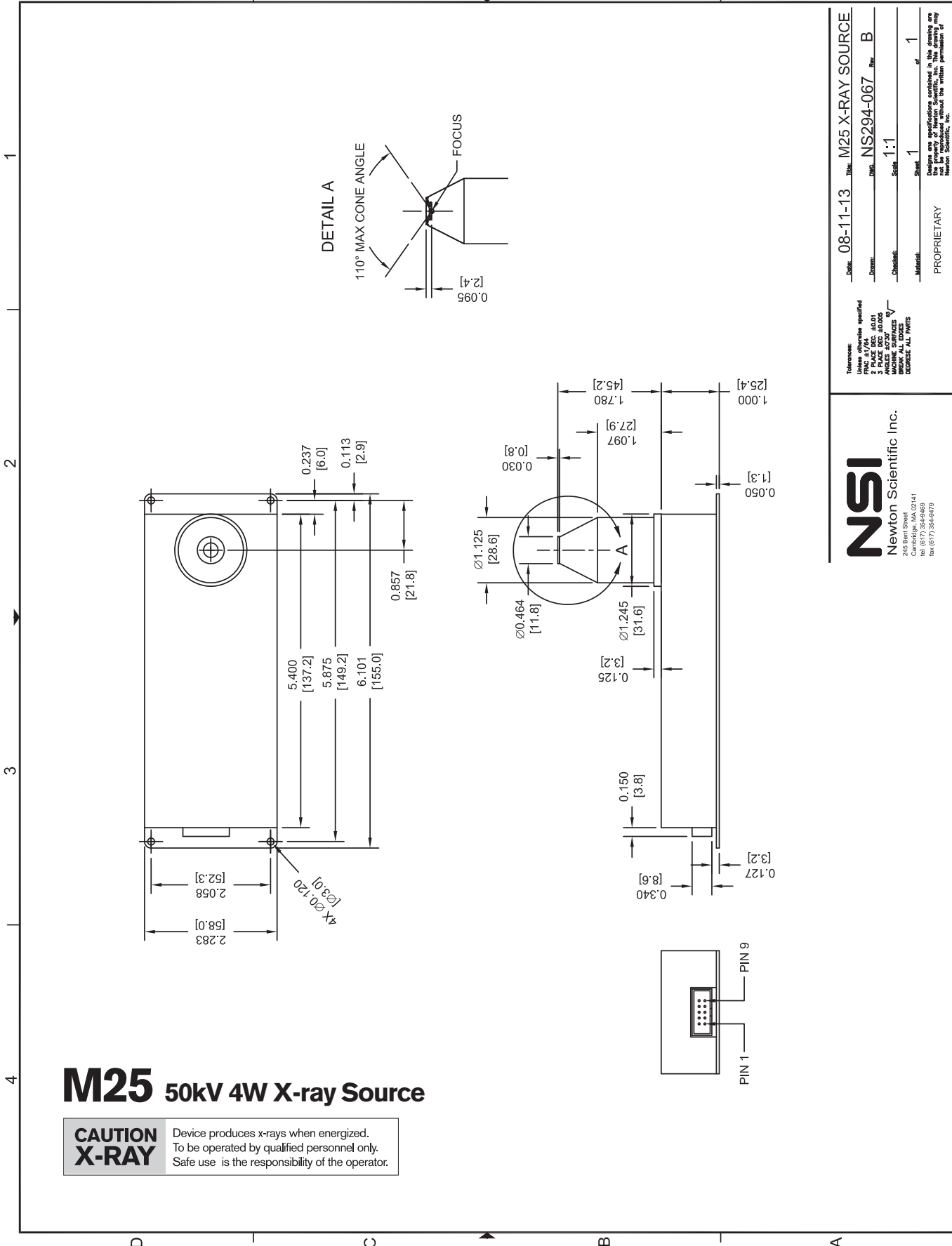
Specifications

Tube type:	Metal-ceramic
Tube voltage:	5 kV - 50 kV
Tube current:	0 - 200 μ A
Tube power:	4 watts maximum
Cathode type:	Tungsten filament
X-ray window:	Be, 125 μ m
Target type:	Transmission
Available targets:	Au, Ag, Rh, W
Depth to focal spot:	2.4 mm (see drawing)
X-ray cone angle:	110° (see drawing)
Input voltage:	5 - 12 VDC
HV polarity:	Grounded anode
HV stability:	< 0.1%
Electrical insulation:	Silicone potting
Radiation shielding:	Self-shielded
Operating temp (case):	-10°C to 60°C
Storage temp:	-25°C to 85°C
Cooling:	Air cooled
Ambient humidity:	90% max (non-condensing)
Weight:	Approx. 385 g.



Interface

PIN	NAME	TYPE	RANGE	SCALING / VALUE
Pin 1	V+	Input Power	5-12 VDC	
Pin 2	V+	Input Power	5-12 VDC	
Pin 3	GND	Ground	0V	
Pin 4	GND	Ground	0V	
Pin 5	TUBE I CONTROL	Analog Input	0-4V	0-200 μ A (4W limit)
Pin 6	TUBE HV CONTROL	Analog Input	0-4V	0-50 kV
Pin 7	TUBE READY	Digital Output	TTL	LOW = NOT READY HIGH = READY
Pin 8	TUBE ENABLE	Digital Input	TTL	LOW = OFF HIGH = ENABLE
Pin 9	TUBE HV MONITOR	Analog Output	0-4V	0-50 kV
Pin 10	TUBE I MONITOR	Analog Output	0-4V	0-200 μ A



M25 50kV 4W X-ray Source

CAUTION X-RAY Device produces x-rays when energized. To be operated by qualified personnel only. Safe use is the responsibility of the operator.

Date:	08-11-13	Title:	M25 X-RAY SOURCE
Drawn:	DWG.	NS294-067	Rev. B
Checked:		Scale:	1:1
Material:		Sheet:	1 of 1
PROPRIETARY			
Designs and specifications contained in this drawing are the property of Newton Scientific, Inc. This drawing may not be reproduced without the written permission of Newton Scientific, Inc.			

NSI
Newton Scientific Inc.
 245 Bart Street
 Cambridge, MA 02141
 Tel: (617) 354-6889
 Fax: (617) 354-6878

Tolerances:
 Unless otherwise specified:
 1. FINISH: AS SUPPLIED
 2. HOLE DEC: 0.01
 3. PLATE DEC: 0.0005
 4. SURFACE FINISH: 32
 5. MACHINING SURFACES: $\sqrt{}$
 BREAK ALL EDGES
 DIMENSIONS IN INCHES